

# TBA SL90A

SANLORENZO | 2024 | 27,6m (90ft)



# SL90A

SANLORENZO | 2024 | 27,6m (90ft)

Name	TBA
Builder	Sanlorenzo
Model	SL90A
Built	2024
Length Overall	27,6 m   91ft (28m)
Maximum Beam	6,50 m   21ft 3in
Draught	1,93 m   6ft 3in
Staterooms	4
Guest Accommodation	8+2 people
Crew Accommodation	4
Flag	Cook Islands
Maximum Speed	32 knots
Cruise Speed	25 knots
Range at 9,5kts	960 nm
Fuel Oil Tank Capacity	9.000 l
Fresh Water Tank Capacity	1700 l
Engines	2 x MAN 12V-2000
Engine Hours (11/24)	288/288
Generators	2 x Kohler 35Kw
Generators Hours (11/24)	662/588
Location	Athens, Greece
Price	<b>€8,800,000 ex VAT</b>



## Introduction:

This 2024 Sanlorenzo SL 90A is a stunning embodiment of luxury and innovation. Delivered in April 2024 she has seen minimal private use and is in exquisite condition still under warranty. This yacht redefines elegance on the water with its asymmetric design, offering a unique and spacious experience for all aboard. With over €1.1 million in customization options, this SL90A is fully loaded to provide the amenities of a significantly larger yacht.

Features:

- **Innovative Design:** The asymmetric layout provides an increased interior volume, allowing for a more spacious and comfortable living area and vast spaces for up to 10 guests in 4 comfortable cabins.
- **Luxurious Interiors:** Each cabin is equipped with en-suite facilities, featuring high-end materials and exquisite design. The full beam master cabin on the main deck has a large dressing area and direct access to the bow terrace.
- **Modern Amenities:** Includes a large fully-equipped galley, a lavish salon area with customized Minotti furnishings & a wine fridge for 34 bottles, and an expansive fully equipped flybridge for relaxation and entertainment, fully equipped with a wet bar and barbecue.
- **Advanced Technology:** State-of-the-art navigation and entertainment systems ensure a seamless and enjoyable journey. Features include multiple Raymarine screens for comprehensive control and oversight.
- **Technical upgrades:** The yacht features an upgraded supertropical AC system, electronic fin stabilizers (at anchor and underway), stern thruster, 160l boiler, a hardtop with powered louver at the flybridge .

**Customized Interior Features:** Experience unparalleled luxury with custom modifications that include a closed wheelhouse dinette and bespoke TV cabinets in guest cabins. The interior is adorned with Penelopeoggi Nuvola leather and features strip LED lighting and a dimmer package to enhance comfort and ambiance.

**Luxury Amenities:** The yacht's interior is thoughtfully designed with additional storage solutions and high-end furnishings, including a customized Minotti sofa and coffee table. Bathrooms are upgraded with dual headshowers and exquisite accessories.

**Exterior Features:** With teak flooring, sun awnings, and inox showers, the SL90A's exterior is as impressive as its interior. Enjoy the powered louver roof system, underwater lights, and an extended flybridge fully equipped with a wetter and double barbecue grills.

The Williams Dieseljet 395 tender is conveniently stored on the platform, while the garage accommodates a jet ski.

**Advanced Equipment:** Equipped with a hydraulic stern thruster, electric stabilizer fins, and a watermaker, the yacht ensures smooth and comfortable voyages. The engine room features twin MAN 2000hp engines, which have only run 288 hours, and two Kohler 35 generators with 620 and 580 hours, ensuring reliable performance.

**Yacht Layout:** The SL90A's asymmetric layout maximizes space and functionality. It features a tender garage, a spacious cockpit, a huge flybridge, and a large saloon with customizable furniture. The full beam main deck master cabin has private terrace and dressing area, complemented by 3 well-appointed guest cabins and spacious crew quarters for 4 at the lower deck.

**Flybridge and Control:** Access the expansive flybridge from the foredeck, offering ample space for sunbathing and crew activities. The helm station is equipped with multiple Raymarine screens for comprehensive control and oversight.

**Owner's Cabin:** The owner's suite is a sanctuary of luxury, featuring a large bed, a TV integrated into a mirror, cleverly hidden storage, and a marble bathroom with skylights. Direct access to the bow terrace enhances the exclusivity of this space.

**Guest Accommodation:** Located on the lower deck, the yacht offers three guest cabins, 1 VIP plus 2 Double cabins with Pullman beds each with private bathrooms, ensuring comfort and privacy for all guests. Double cabins can be converted to twin.

This SL90A is a masterpiece of modern yacht design, taking advantage of Sanlorenzo's extensive customization options and luxurious features that cater to the most discerning yacht owners.

Experience the ultimate in personalized luxury with this exceptional vessel.

**SL90A**  
SANLORENZO | 2024 | 27,6m (90ft)



**SL90A**  
SANLORENZO | 2024 | 27,6m (90ft)



**SL90A**  
SANLORENZO | 2024 | 27,6m (90ft)

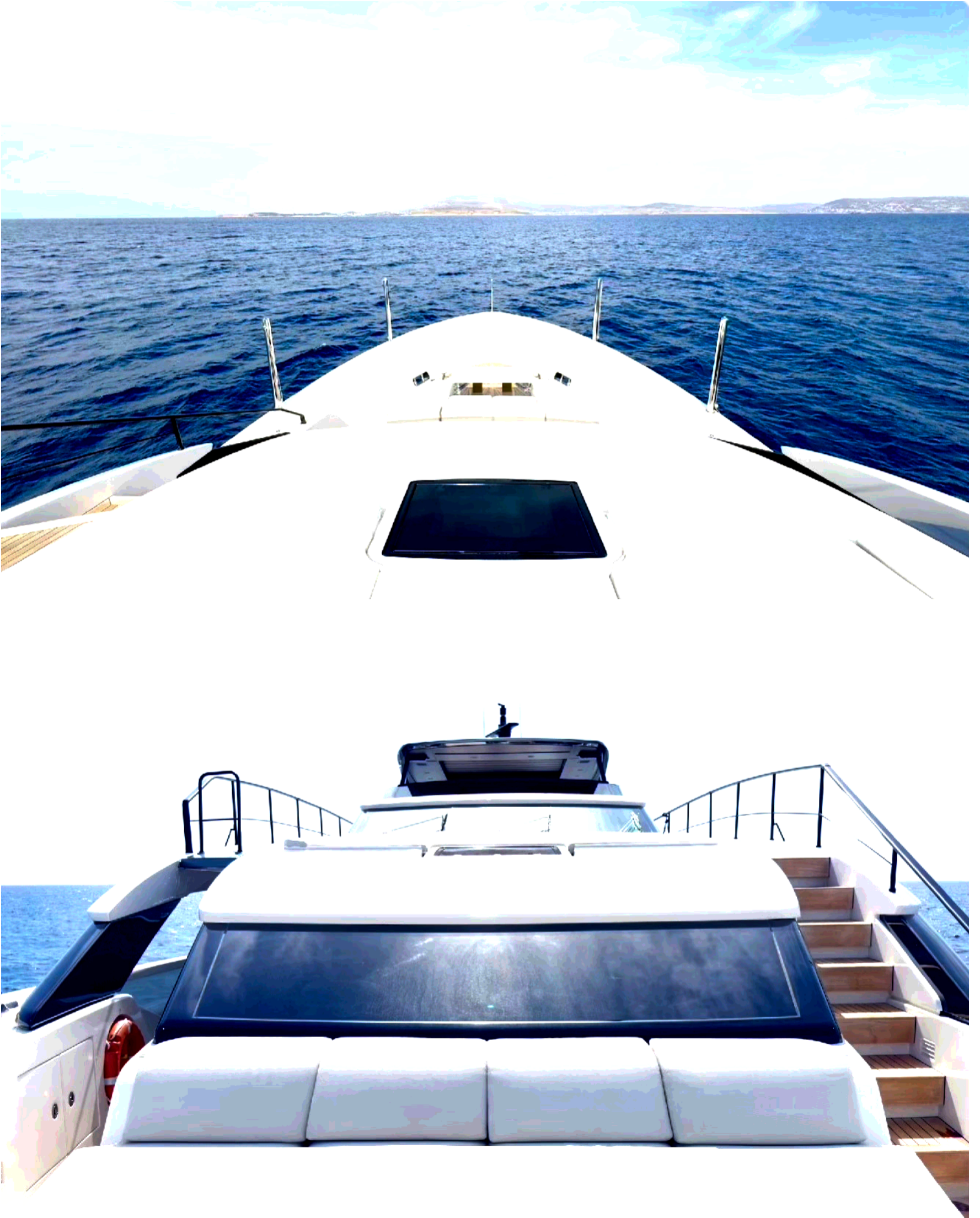




**SL90A**  
SANLORENZO | 2024 | 27,6m (90ft)



**SL90A**  
SANLORENZO | 2024 | 27,6m (90ft)



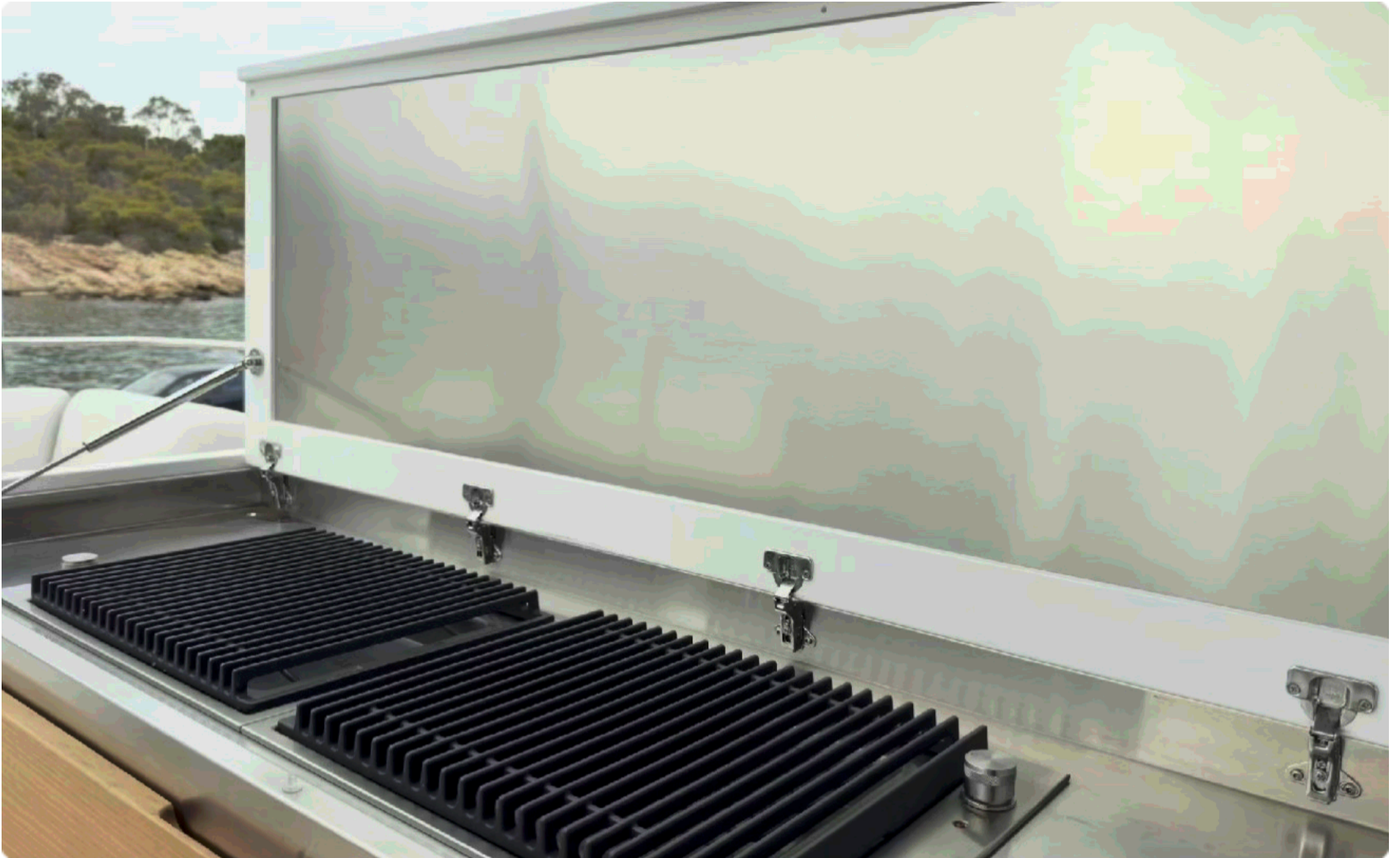
**SL90A**  
SANLORENZO | 2024 | 27,6m (90ft)



SL90A  
SANLORENZO | 2024 | 27,6m (90ft)



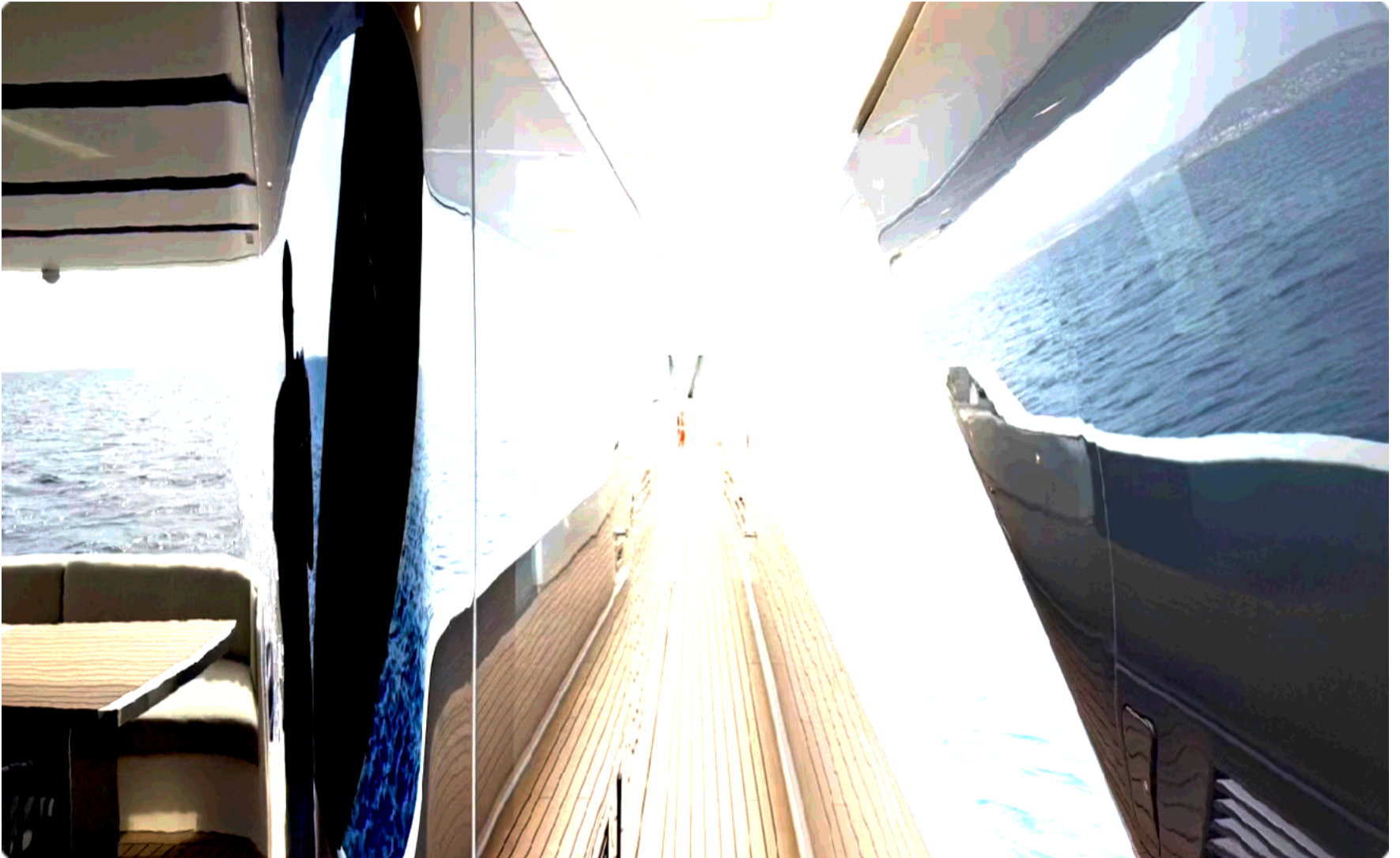
**SL90A**  
SANLORENZO | 2024 | 27,6m (90ft)



SL90A  
SANLORENZO | 2024 | 27,6m (90ft)



**SL90A**  
SANLORENZO | 2024 | 27,6m (90ft)



SL90A  
SANLORENZO | 2024 | 27,6m (90ft)





SL90A  
SANLORENZO | 2024 | 27,6m (90ft)



**SL90A**  
SANLORENZO | 2024 | 27,6m (90ft)



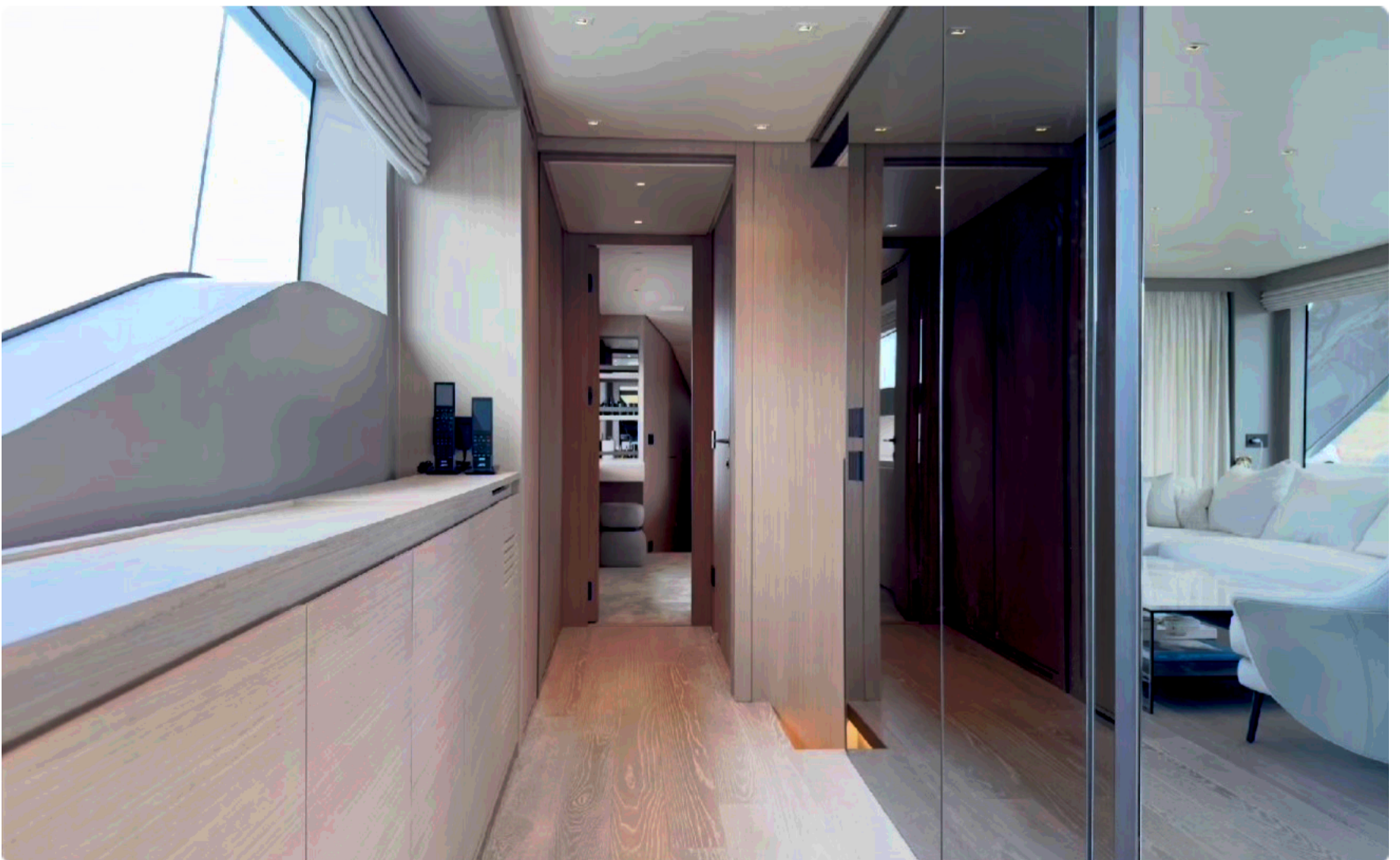
SL90A  
SANLORENZO | 2024 | 27,6m (90ft)



**SL90A**  
SANLORENZO | 2024 | 27,6m (90ft)



**SL90A**  
SANLORENZO | 2024 | 27,6m (90ft)



**SL90A**  
SANLORENZO | 2024 | 27,6m (90ft)



**SL90A**  
SANLORENZO | 2024 | 27,6m (90ft)



SL90A  
SANLORENZO | 2024 | 27,6m (90ft)





SL90A  
SANLORENZO | 2024 | 27,6m (90ft)



**SL90A**  
SANLORENZO | 2024 | 27,6m (90ft)



**SL90A**  
SANLORENZO | 2024 | 27,6m (90ft)



SL90A  
SANLORENZO | 2024 | 27,6m (90ft)



**SL90A**  
SANLORENZO | 2024 | 27,6m (90ft)



**SL90A**  
SANLORENZO | 2024 | 27,6m (90ft)



**SL90A**  
SANLORENZO | 2024 | 27,6m (90ft)



SL90A  
SANLORENZO | 2024 | 27,6m (90ft)

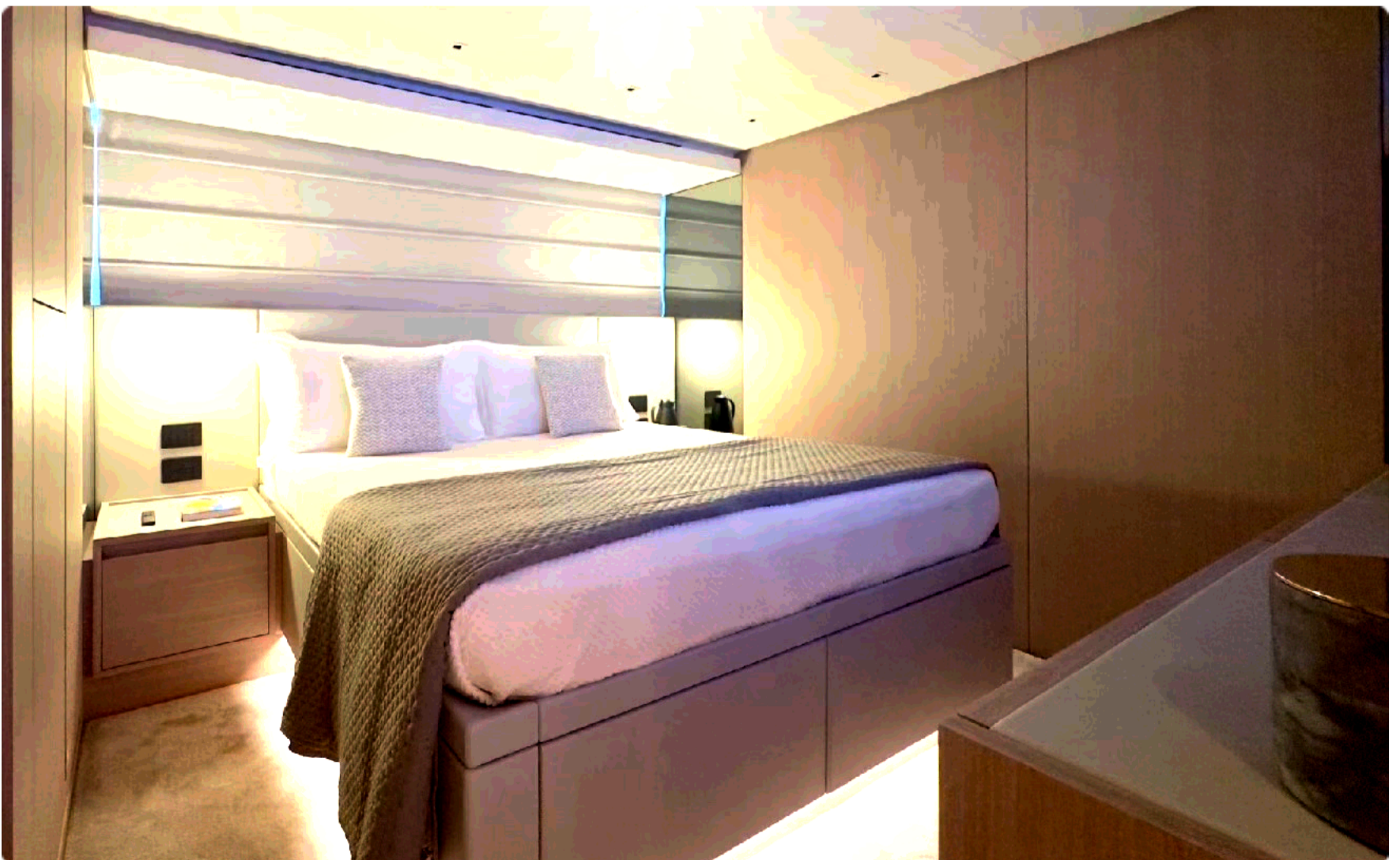




SL90A  
SANLORENZO | 2024 | 27,6m (90ft)



SL90A  
SANLORENZO | 2024 | 27,6m (90ft)



**SL90A**  
SANLORENZO | 2024 | 27,6m (90ft)



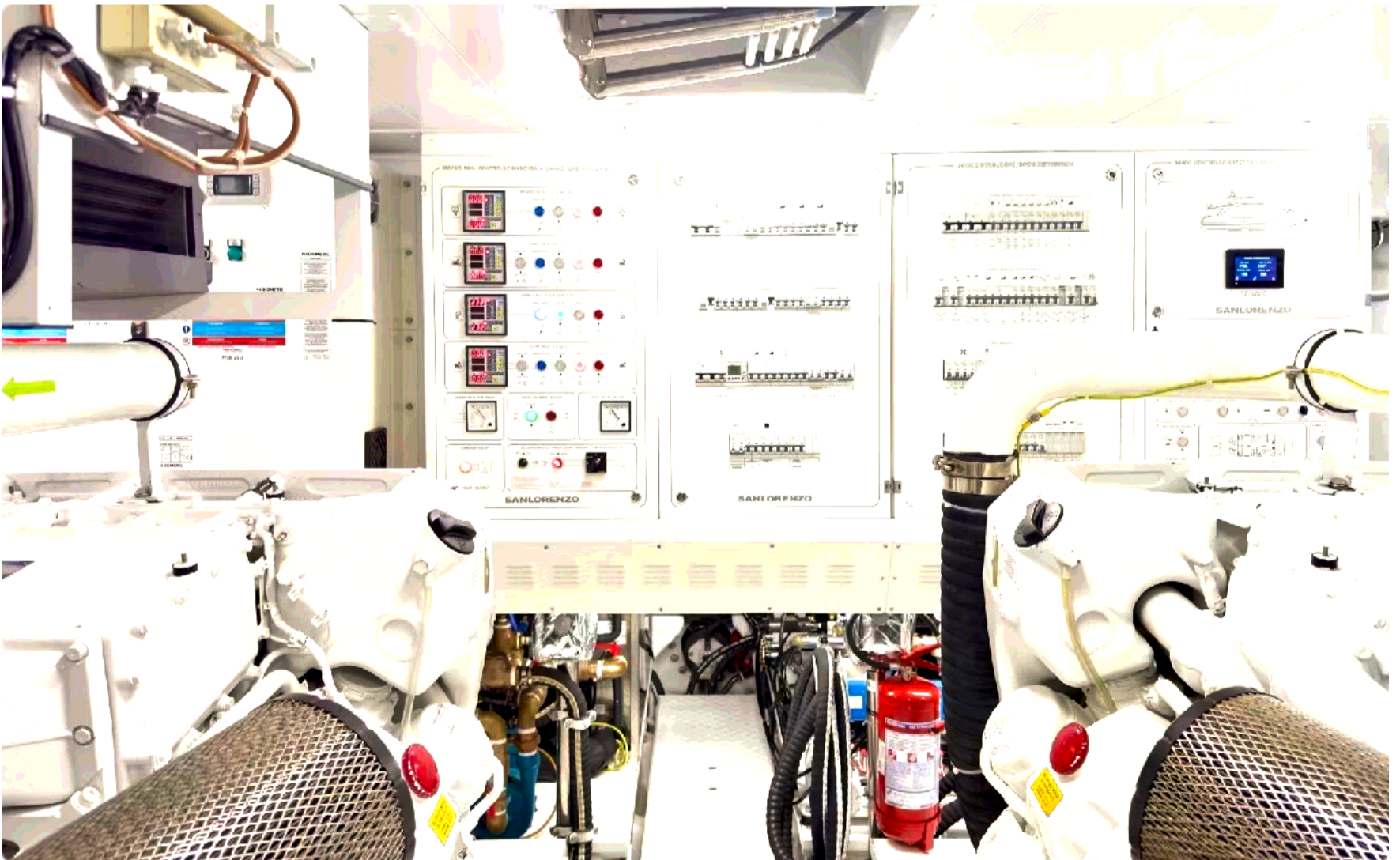
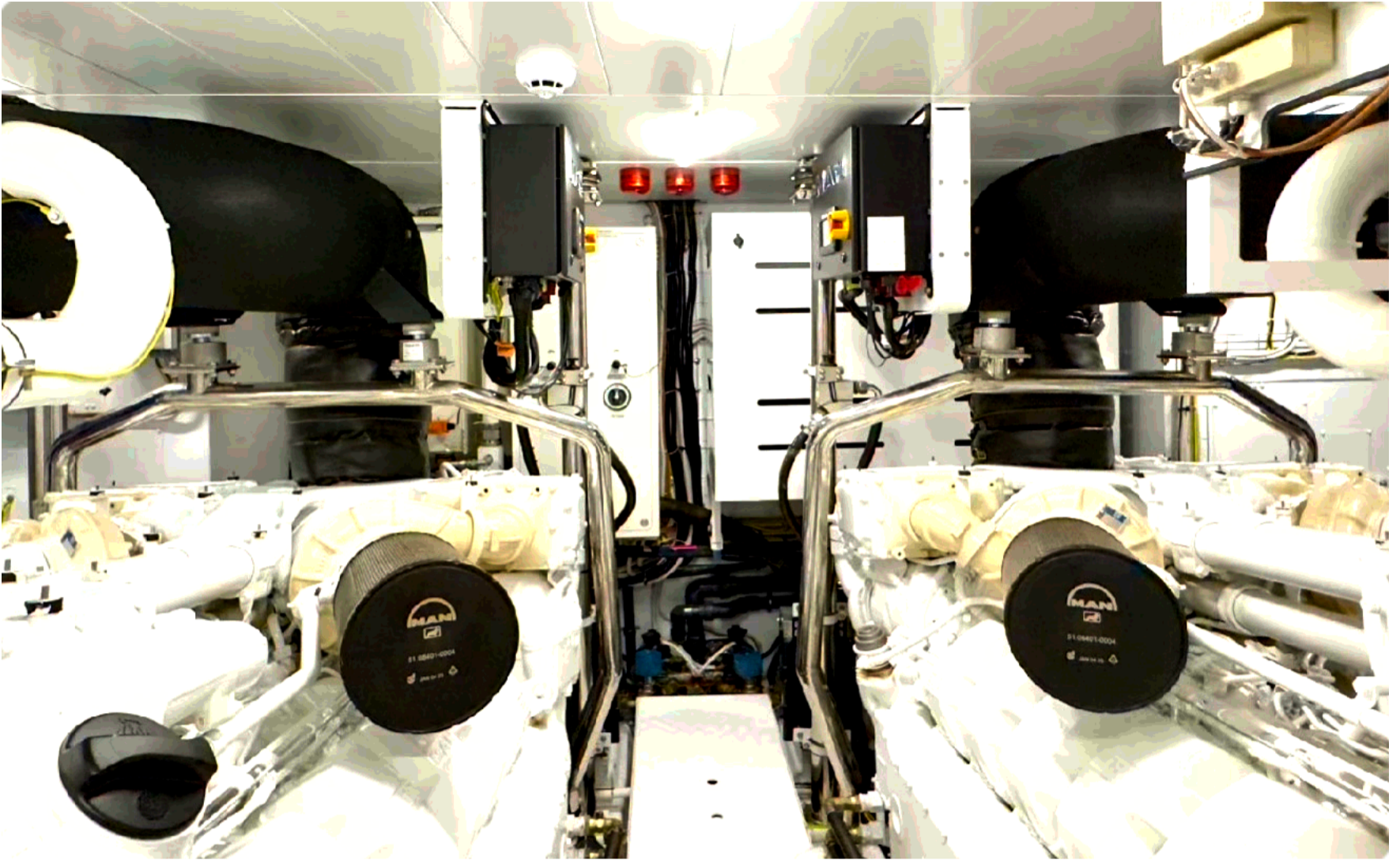
**SL90A**  
SANLORENZO | 2024 | 27,6m (90ft)



**SL90A**  
SANLORENZO | 2024 | 27,6m (90ft)



SL90A  
SANLORENZO | 2024 | 27,6m (90ft)



SL90A  
SANLORENZO | 2024 | 27,6m (90ft)



## **ENGINES**

2 x MAN 12V - 2000 HP ENGINES

## **ELECTRICAL APPLIANCES**

12V 25A battery charger for generator batteries

Cablemaster - Glendinning CM7 for shore sockets 50/63A (only for one shore connection)

Additional waterproof sockets in bar cabinet on flybridge

Palagi L7602 waterproof socket on flybridge under the hardtop pillar height: 45 cm

Additional socket in galley for coffee machine

Additional socket in owner's cabin vanity library

Additional sockets in crew dinette

Additional sockets in salon

## **ALARMS AND CONTROLS**

Raymarine additional 12" touch screen monitor (ship monitoring system) in crew mess

Predisposition for 4 CCTV IP Raymarine cameras

Raymarine gold navigation package.

Predisposition for additional fixed control station on aft cockpit (cables)

Fixed control station MAN in aft cockpit

## **SATELLITE AND COMMUNICATION SYSTEMS (TV SAT)**

2 KVH TV6 empty radome

### **AUDIO AND VIDEO APPLIANCES\***

Audio-video gold package

Samsung TV 75" in black frame finishing in salon.

Predisposition for TV in crew dinette only

Predisposition for KVH TV6 TV-Sat antenna (cables predisposition + multiswitch)

Predisposition for Wi-Fi internet and internal network (cables predisposition)

## **HOUSEHOLD APPLIANCES**

Miele oven 90 cm

Miele cooktop 80 cm.

Boiler 160 liters.

Icemaker in starboard bar cabinet on flybridge



Grill Barazza in port bar cabinet on flybridge

Wine cooler for 34 bottles in salon

Upgrade to supertropical AC system:

- upgrade to bigger chiller (n.2 chiller tot. BTU/h: 240000)
- upgrade to bigger fan coils
- double circulation pump
- double water inlet pump
- additional fan coil in engine room
- increased insulation for AC pipes
- increased insulation for external superstructure
- use of anti-condensation varnish for rough surface of ceilings panels and frames up to 15 m from the plenum
- custom furnitures for higher volums fan coils pipes and insulation
- custom modification for garage GRP to have more space in engine room for chiller installation

## **INTERIOR ACCESSORIES**

Custom modification for closed wheelhouse dinette with sofas and table with wood top and antiroll.

Custom modification for bow wall in salon with additional full height cabinet storage behind TV in fumè mirror finishing with TV on view (TV not included)

Custom TV cabinets in guest cabins (one for each)

Pullman beds in guest cabins (one for each)

Sliding bed in aft port guest cabin

Sliding bed in aft starboard guest cabin

Electric decorative curtains with button control: 2 in owner's cabin + 5 in salon.

Blackout fabric on the back of decorative curtains in salon.

Penelopeoggi Nuvola leather top inside vanity in owner's and vip cabins.

Additional rectangular cushions as backrests for dining bench in salon in Minotti Nakano 01 bianco fabric including modification for dining bench cushions.

Custom modification for dining bench in salon with additional Calacatta gold polished finishing marble top in aft area.

Custom fixed dining table in salon with Calacatta gold polished finishing marble top - marble top thickness 4 cm.

Strip led light under the bed and nightstands in owner's and vip cabins

Dimmer package for interiors (guest cabins bathrooms galley and wheelhouse)

Additional lacquered cabinet in galley closed with doors in lower part and shelves with stainless steel antirolls in upper part

Additional folding top to use like working top over crew staircase with structure and stainless steel top

Lacquered Poliestere Bianco 003 polished finishing for Boffi cabinets.

Olivari Lotus M238B handles throughout the boat (except crew) in US Superantracite satinato finishing.

Metals in all boat (antirols handrails - except crew) in metal Olivari US Superantracite satinato finishing.

Custom configuration for Minotti Andersen L-shaped sofa in salon with pouf in aft area in Nakano 01 bianco fabric custom size.

Minotti Liam coffee table 160 x 80 x h38 cm with Calacatta marble upper top and oak moka lower top.

Minotti Angie armchair in salon with Penelopeoggi Nuvola canapa leather backrest and Nakano 01 bianco fabric for cushions

Headshower in vip bathroom (standard in owner's bathroom)

WC with integrated shower in each bathroom (except crew)

backpainted trasparente glass wall in day toilet RAL 9001.

Marble wall in owner's shower in front of shower door in Silk Georgette matt finishing marble including niche.

Fantini Young bathroom accessories in each bathroom (except crew) in S1 Deep Black PVD finishing. - including upgrade

Upgrade to headshowers in S1 Deep Black PVD finishing in owner's and vip bathroom.

Hydroshowers in each bathroom (except crew) Fantini art. 8486 in S1 Deep Black PVD finishing.

Manual hi-lo system for folding table in crew dinette with additional cushion to use like a bed.

Additional reading light in crew dinette including installation

Additional manual blackout curled curtain in crew dinette

## **EXTERIOR ACCESSORIES**

Port side hull sliding wall with hi-lo electric system (salon area)

Hardtop with powered louver roof system

Sun awning for the stern area of the flybridge behind the hardtop

Teak floor for flybridge (included side superstructure walkways)

External inox column shower on flybridge

External inox shower Riva Y on swim platform

Searchlight with control in the wheelhouse and on flybridge

Sun awning for bow area

Teak floor for bow area

Cockpit summer cover (stern area and sides area)

8 underwater lights: 2 in aft transom + 3 on each side

Extra length chains one for each anchor

Foot switch for anchor windlass

Dimmer for exterior

Rigid handrail inserts in superstructure both sides and bow area (not cable)

Custom L-shaped bar cabinet in bow starboard side on flybridge with corian glacier white fixed top and sides varnished teak doors with appliances accommodation.

Waste basket with lid in port bar cabinet on flybridge

Upgrade to corian glacier white finishing for port bar cabinet and for foldable top and sides cabinet behind pilot seat on flybridge.

fixed tables with slatted varnished teak top and stainless steel profile + additional central part in varnished teak (including cover for central part) in aft cockpit.

2 B&B Erica E61S dining chairs in aft cockpit with anthracite structure and cushions in Leila 102 fabric.

8 B&B Erica E61S dining chairs on flybridge with anthracite structure and cushions in Leila 102 fabric.

B&B Butterfly modular sofa in aft area of flybridge Leila 102 fabric.

Flexform Pico Outdoor dining table on flybridge with brunito structure and Iroko natural top.  
Dimension: 233x100xH74 cm.

## **THRUSTERS AND STABILIZERS**

Hydraulic stern thruster

Electric stabilizer fins (at anchor and under navigation)

Additional insulation for stabilizer fin boxes in both guest cabins

## **ENGINE ROOM EQUIPMENT**

Idromar 250 l/h watermaker

Electric pump for engine oil change (tank not included)

Additional 24V fresh water pump

Additional grey and black water pump in bypass Upgrade